

Magnetic filter funnels

Instructions for Use

Introduction

Intended use

Cytiva Lab Filtration products are designed for professional laboratory applications only. These products are not approved for use in medical, clinical, surgical or other patient protection applications. They are also not suitable for use in Biopharmaceutical manufacturing or production.

Important

Employment of the products in applications not specified, or failure to follow all instructions contained in this Instructions for Use, can result in personal injury, damage to property or the product, or improper functioning of the product.

Description



- No-leak magnetic seal allows one-handed operation.
- Ideal for the analysis of microbiological or particulate contamination in liquids using the Membrane Filtration (MF) Technique.
- Polyphenylsulfone construction provides durability and added safety over glass funnels.
- New Sentino™ magnetic filter funnel designed for use with the Sentino pump for water quality testing.

Instructions for use

Before you start

When filtering samples for microbiological analysis, it is recommended that standard aseptic technique is used whenever possible.

Step	Action
1	Make sure that the support screen is firmly seated in the funnel base. Three options are available as filtration platform: <ul style="list-style-type: none"> • Standard manifold • Filter flask • Sentino pump

Standard manifold of filter flask

If using standard manifold or filter flask:

Step	Action
1	Press stem with No. 8 stopper firmly into manifold or filter flask.
2	Make sure stopper fits snugly to prevent leakage.

Sentino pump

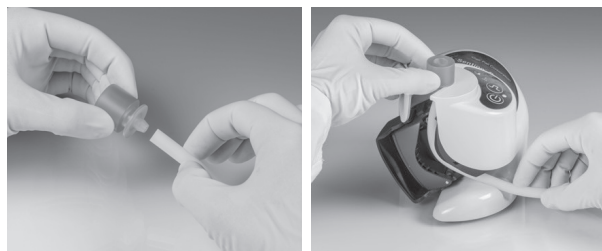
If using Sentino pump: Load fluid path and press Sentino magnetic filter funnel into adapter.

Step	Action
1	Press tubing onto hose barb of adapter (PN 4283).
2	With the Sentino pump positioned on benchtop, open pump loading door fully.
3	Slide adapter into the guide on the pump housing until it is firmly seated.
4	Tuck the pump drive tubing into the slot in the pump head and position the tube into the guide slot in the base.

Step	Action
5	Remove tubing slack by pulling the tubing against the rollers as you close pump loading door to a snap-closed position.

Note:

For optimal performance, trim and discard the small portion of tubing in contact with the rollers once a day.



Filtration

Step	Action
1	Place 47 mm filter over the support screen on the funnel base. Use circular ridge to guide membrane into position.
2	Place funnel housing on top of base. Magnetic force seals membrane in place between funnel housing and base.
3	Filter and rinse sample using standard guidelines for MF Technique.
4	Remove funnel housing by applying a slight downward pressure as you tip the cylinder to break the magnetic force. Lift the cylinder away from the base.

Note:

When using the Sentino magnetic filter funnel with the Sentino pump, it is best to position the pump to accommodate the optimal leverage point for either right or left-handed use:



5	Retrieve membrane for culturing or analysis using the forceps access point and gently lifting upward.
---	---

Specifications

Parameter	Specification
Materials of construction	Funnel body, stem, support screen, and lid: Polyphenylsulfone Lid plugs: Polypropylene
Filter size	47 mm
Funnel capacity	150, 300, or 500 mL
Effective filtration area	150 and 300 mL: 9.6 cm ² , 35 mm effective diameter 500 mL: 13.1 cm ² , 41 mm effective diameter

Parameter	Specification
Dimensions	Height: Standard magnetic filter funnel 150 mL: 17.8 cm (7.0 in.) 300 mL: 22.9 cm (9.0 in.) 500 mL: 19.6 cm (7.7 in.) Height: Sentino magnetic filter funnel 150 mL: 11.8 cm (4.6 in.) 300 mL: 16.8 cm (6.6 in.) 500 mL: 16.6 cm (6.5 in.) Diameter: 150 and 300 mL: 7.6 cm (3 in.) 500 mL: 8.9 cm (3.5 in.)
Pressures	Vacuum use only
Sterilization	Provided non-sterile; autoclavable if desired at 121°C to 123°C (250 to 253 °F) at approximately 1.0 bar (100 kPa, 15 psi) for 15 to 20 minutes Note: Repeated use of detergents containing polyoxyethylated alkyl phenols and alcohols, or anti-corrosion, anti-scaling boiler additives that can carry over in steam, can cause polyphenylsulfone to crack, thereby reducing the life of the product. Do not autoclave rubber stopper. Do not autoclave with aluminum foil; use autoclave paper. Consult Cytiva if using for thin membrane such as track-etched material.

Ordering information

Standard magnetic filter funnels, 47 mm

Part number	Description	Pkg
4247	150 mL capacity	1/pkg
4242-N	300 mL capacity	1/pkg
4241	300 mL capacity, with lid	1/pkg
4238	500 mL capacity	1/pkg

Sentino magnetic filter funnels, 47 mm

Part number	Description	Pkg
4271	150 mL capacity	1/pkg
4273	300 mL capacity	1/pkg
4277	500 mL capacity	1/pkg

Accessories

Part number	Description	Pkg
4235	Stainless steel support screen	1/pkg
4246	Lid kit (for 300 mL funnel only)	1/pkg
4244	Base, without support screen	1/pkg
4279	Base, with support screen for use with Sentino pump	1/pkg
4248	150 mL funnel housing	1/pkg
4243	300 mL funnel housing	1/pkg
4254	500 mL funnel housing	1/pkg
4283	Adapter (polyphenylsulfone) for use with Sentino pump	1/pkg
4285	Drive tubing for Sentino pump; thermoplastic elastomer, 3/16 in. ID x 5/16 in. OD, 2 ft length	10/pkg
82728N	No. 8 rubber stopper	5/pkg
87264	Polyphenylsulfone support screen	1/pkg



Give feedback on this document

Visit cytiva.com/techdocfeedback or scan the QR code.



cytiva.com

Cytiva and the Drop logo are trademarks of Life Sciences IP Holdings Corporation or an affiliate doing business as Cytiva.

Sentino is a trademark of Global Life Sciences Solutions USA LLC or an affiliate doing business as Cytiva.

Any other third-party trademarks are the property of their respective owners.

© 2025 Cytiva

For local office contact information, visit cytiva.com/contact

85948 AA V:6 03/2025

